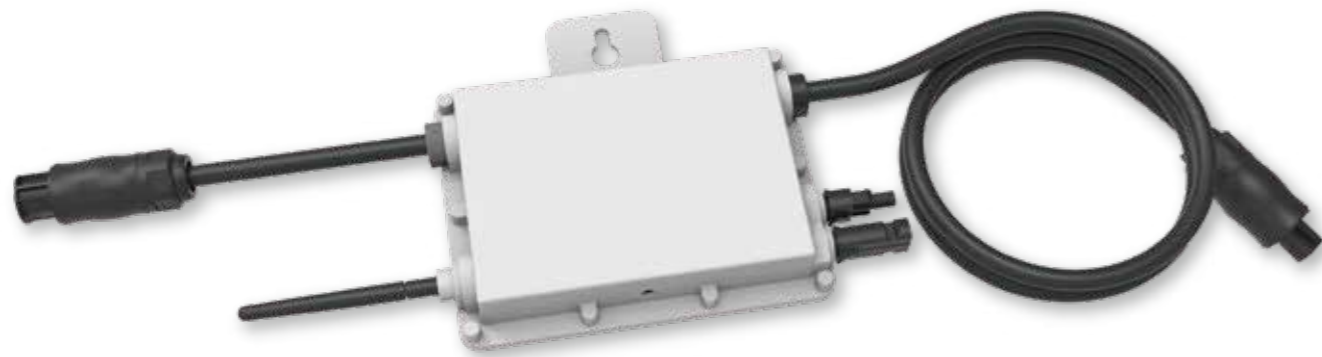


Microinverter



APEX-M-300 /500

- R
Support reactive power compensation
- IP67
IP67 protection degree, 10 years warranty
- 1
1 MPP tracker, module level monitoring
- PLC, Zigbee or WIFI
PLC, Zigbee or WIFI communication
- Rapid shutdown
Rapid shutdown function

Technical Data

Model	APEX-M-300		APEX-M-500	
Input Data (DC)				
Recommended input Power (STC)	210~400W (1 Piece)		210~600W (1 Piece)	
Maximum input DC Voltage	60V			
MPPT Voltage Range	25~55V			
Full Load DC Voltage Range (V)	24.5~55V		40~55V	
Max. DC Short Circuit Current	19.5A			
Max. input Current	13A			
No.of MPP Trackers	1			
No.of Strings per MPP Tracker	1			
Output Data (AC)				
Rated output Power	300W		500W	
Rated output Current	1.4A	1.3A	2.3A	2.2A
Nominal Voltage / Range (this may vary with grid standards)	220V/0.85Un-1.1Un	230V/0.85Un-1.1Un	220V/0.85Un-1.1Un	230V/0.85Un-1.1Un
Nominal Frequency / Range	50 / 60Hz			
Extended Frequency / Range	45~55Hz / 55~65Hz			
Power Factor	>0.99			
Maximum units per branch	17		10	
Efficiency				
CEC Weighted Efficiency	95%			
Peak Inverter Efficiency	96.5%			
Static MPPT Efficiency	99%			
Night Time Power Consumption	50mW			
Mechanical Data				
Ambient Temperature Range	-40~65°C			
Size (mm)	189Wx184Hx31.5D (Without mounting bracket and cable)			
Weight (kg)	2.15			
Cooling	Natural cooling			
Enclosure Environmental Rating	IP67			
Features				
Compatibility	Compatible with 60~72 cell PV modules			
Communication	Power line / WIFI / Zigbee			
Grid Connection Standard	VDE4105, IEC61727/62116, VDE0126, AS4777.2, CEI 0 21, EN50549-1, G98, G99, C10-11, UNE217002, NBR16149/NBR16150			
Safety EMC / Standard	UL 1741, IEC62109-1/-2, IEC61000-6-1, IEC61000-6-3, IEC61000-3-2, IEC61000-3-3			
Warranty	10 years			