

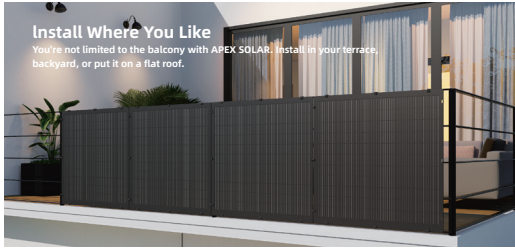


**APEX SOLAR**

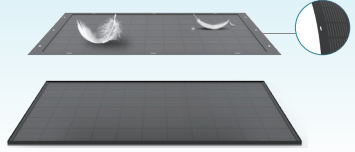
**Flexible Balcony Solution**



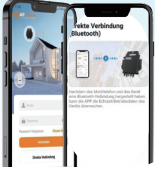
# Introducing Apex Solar Power System



**Easy to install:**  
70% lighter



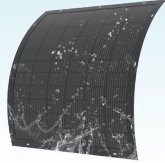
**Control Power with the APsystems App**



**12 Year Guarantee**



**IP67 Protection class**



**No Installation request required**

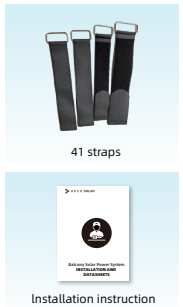
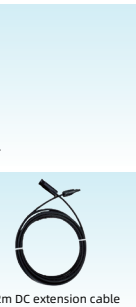
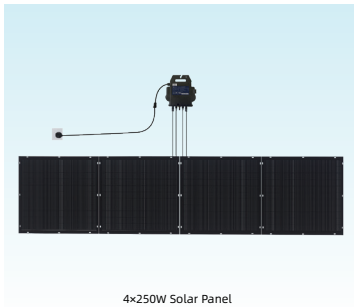


## 18.68% high solar conversion rate

Our advanced, flexible solar panels with a conversion efficiency of 18.68% generate an average of 3 kWh/day. They offer a simple, stylish solution for the efficient production of green energy.



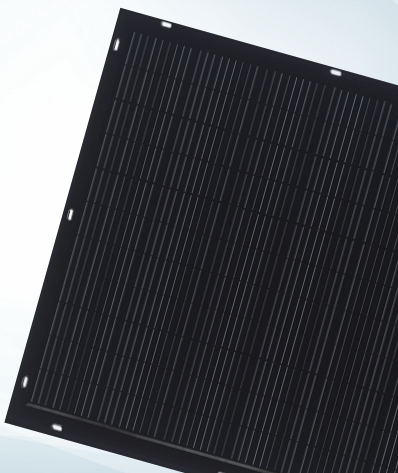
## What's In The Box



# APEX-FLEX-240-260W

## Flexible Solar Panel

240-260W >>



First-Class 17.95% Conversion  
Easy installation

65%

Lighter than  
regular components



Smooth Black  
Surface

### Electrical Performance Parameter (STC)

Parameter Name	APEX-FLEX-240	APEX-FLEX-245	APEX-FLEX-250	APEX-FLEX-255	APEX-FLEX-260
Maximum power (Pm)	240W	245W	250W	255W	260W
Power Tolerance	0~+5w	0~+5w	0~+5w	0~+5w	0~+5w
Maximum Power Voltage(Vmp)	18.5V	18.8V	19.2V	19.4V	19.7V
Maximum Power Current(Imp )	13.00A	13.02A	13.06A	13.14A	13.20A
Open-circuit voltage ( Voc)	22.3V	22.7V	23.2V	23.7V	23.9V
Short-circuit current ( Isc)	13.61A	13.65A	13.70A	13.70A	13.78A
Module Efficiency(%)	17.24%	17.60%	18.00%	18.32%	18.68%

STC: Irradiance 1000W/m<sup>2</sup>, module temperature 25°C, AM=1.5

### Mechanical

Cell array	72 (12*2*3)	Back board colour	White PV Backsheet
Size	1200mm(L)*1160 mm(W)	Terminal block	Protection grade IP67
Size of 46-piece box	1200*W:1160*H:17 mm	Cable	4mm <sup>2</sup>
Front film	Lightweight high transparent polymer materials	Diode	2
Connector	(+)/(-)300 mm	Weight	4.9KG

### Temperature coefficient

Battery nominal operating temperature	41±2°C
Current temperature coefficient (Isc)	+0.020%/°C
Voltage temperature coefficient	-0.28%/°C
Power factor (Pm)	-0.38%/°C

### Working conditions

Maximum System Voltage	600VDC
Maximum Series Fuse Rating	20A
Operating Temperature	-40~+85°C
Connector	MC4 compatible

# Microinverter-EZ1-M

## Microinverter

**800W** >>  
Upgrade Over the Air



### Datasheet | EZ1 Microinverter Series

Model	EZ1-S	EZ1-M
Region		EMEA
<b>Input Data (DC)</b>		
Recommended PV Module Power (STC) Range	255Wp-550Wp+	300Wp-730Wp+
Peak Power Tracking Voltage		28V-45V
Operating Voltage Range		16V-60V
Maximum Input Voltage		60V
Maximum Input Current	18A x 2	20A x 2
Isc PV	22.5A x 2	25A x 2
<b>Output Data (AC)</b>		
Maximum Continuous Output Power	600VA	600VA <sup>(3)</sup> /799VA
Nominal Output Voltage/Range <sup>(1)</sup>		230V/184V-253V
Nominal Output Current	2.6A	2.6A <sup>(3)</sup> /3.5A
Nominal Output Frequency/ Range <sup>(1)</sup>		50Hz/48Hz-51Hz
Default Power Factor		0.99
<b>Efficiency</b>		
Peak Efficiency		97.3%
Nominal MPPT Efficiency		99.5%
Night Power Consumption		20mW
<b>Mechanical Data</b>		
Operating Ambient Temperature Range <sup>(2)</sup>		- 40 °C to + 65 °C
Storage Temperature Range		- 40 °C to + 85 °C
Dimensions (W x H x D)		263mm x 218mm x 36,5mm
Weight		2.8kg
DC Connector Type		Stäubli MC4 PV-ADBP4-S2&ADSP4-S2
Cooling		Natural Convection - No Fans
Enclosure Environmental Rating		IP67
Power Cord (Optional)		
Wire Size		1.5mm <sup>2</sup>
Cable Length		5M as default
Plug Type		Schuko
<b>Features</b>		
Communication		Built-in Wi-Fi and Bluetooth
Maximum Units Can Be Connected <sup>(4)</sup>		2
Isolation Design		High Frequency Transformers, Galvanically Isolated
Energy Management		AP EasyPower APP
Warranty		12 Years Standard
<b>Compliances</b>		
Safety, EMC & Grid Compliances		EN 62109-1/-2; EN 61000-1/-2/-3/-4; EN 50549-1; DIN V VDE V 0126-1-1; VFR; UTE C15-712-1; CEI 0-21; UNE 217002; NTS; RD647; VDE-AR-N 4105







Apex Solar Energy Technology GmbH

Tel: +49 151 1405 8888

Web: [www.apex-solar.de](http://www.apex-solar.de)

E-mail: [service@apex-solarenergy.com](mailto:service@apex-solarenergy.com)

Company add: Wieland Street 12, 40211 Dusseldorf, Germany

Warehouse add: August-Borsig-Street No.9 , 50126, Dusseldorf, Germany